



FREEPATH

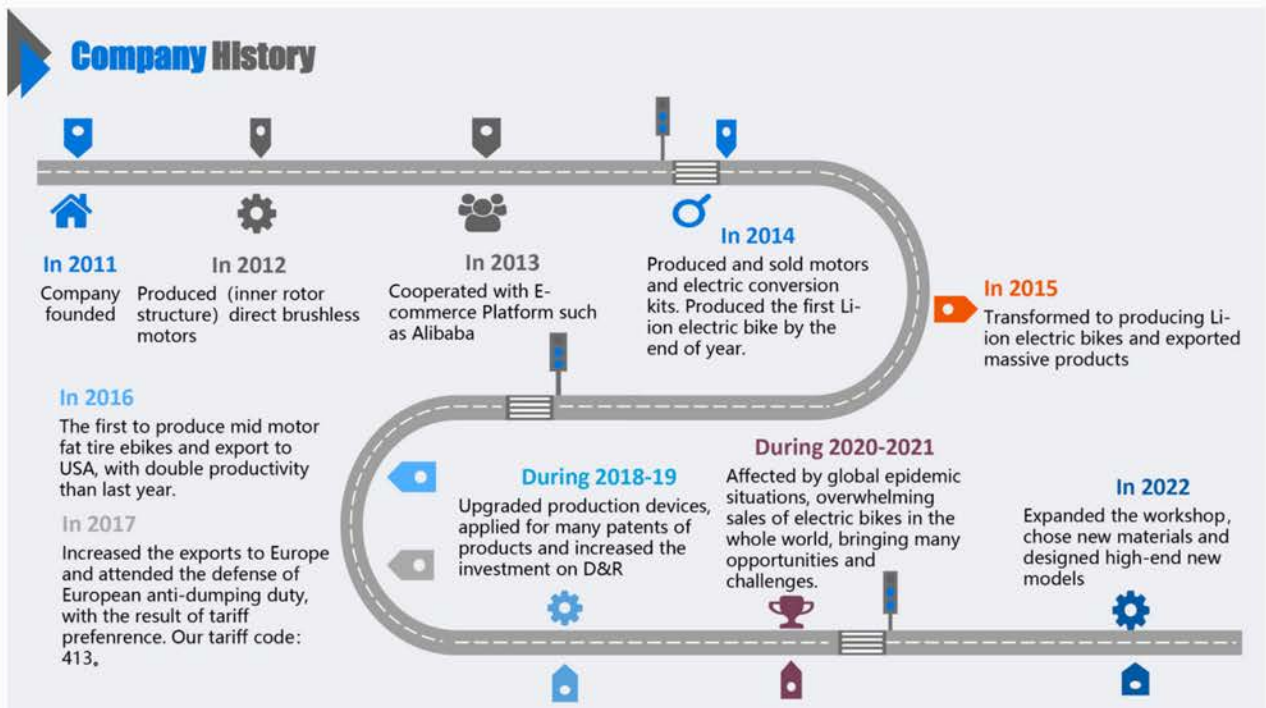
**EBIKE CATALOG
2022-2023**

READ NOW



ABOUT US

- Hangzhou Top Mechanical and Electrical Technology Co., LTD. was founded in May, 2011. In the first 3 years, we had been specialized in the motors of electric bikes. Our unique design of inner rotor structure made great performances in low noise, large torque and amazing uphill, which received massive welcome in Dutch and Japanese markets.
- Since 2014, We have started to offer conversion kits and assemble electric bikes according to the requests of our clients. During that period when electric bikes became the new trend in the American market, we seized that opportunity and developed to the first manufacturer in China who produced and exported mid motor fat tire ebikes.
- After 8 years' hardworking, we grow to the company with more than 8,000 square meters workshop, annual productivity over 50,000 pcs, and passed ISO 9001 quality system authentication. Most of all, our team owns the ability to design and develop new models of electric bikes, as well as offers OEM service for famous brands domestically and overseas.



CARBON FIBER

REFERENCE SPECIFICATION

Frame: carbon fiber

Fork: suspension fork

Motor: 48V500W mid motor
(Bafang M600)

Battery: 48V15Ah lithium battery

Tire: 29"*2.6"

Gear: Sram 11-spd

Brake: Tektro hydraulic disc brake



MODEL NO.: E18-B



MODEL NO.: E18-A

REFERENCE SPECIFICATION

Frame: carbon fiber

Fork: DNM suspension fork

Motor: 48V1000W mid motor
(Bafang M620)

Battery: 48V15Ah lithium battery

Tire: 26"*4.8"

Gear: Sram 11-spd

Brake: Tektro hydraulic disc brake

CARBON FIBER

REFERENCE SPECIFICATION

Frame: carbon fiber

Fork: RST suspension fork

Motor: 48V500W mid motor
(Bafang M600)

Battery: 48V15Ah lithium battery

Tire: 29"*2.2"

Gear: Shimano 9-spd

Brake: Tektro hydraulic disc brake

Net weight: 25KG



MODEL NO.: E10



MODEL NO.: E23

REFERENCE SPECIFICATION

Frame: carbon fiber

Fork: Rockshox suspension fork

Motor: 48V1000W mid motor
(Bafang M620)

Battery: 48V20Ah lithium battery

Tire: 29"*2.6"

Gear: SRAM 11-spd

Brake: Magura hydraulic disc brake

CARBON FIBER

REFERENCE SPECIFICATION

Frame: carbon fiber

Fork: carbon fiber rigid fork

Motor: 36V250W hub motor

Battery: 36V10Ah lithium battery

Tire: 700C*38C

Gear: Front 3-spd * rear 8-spd

Brake: Tektro hydraulic disc brake

Net weight: 16KG



MODEL NO.: EC3

Net weight: 18KG



MODEL NO.: EC2

REFERENCE SPECIFICATION

Frame: carbon fiber

Fork: carbon fiber rigid fork

Motor: 36V250W hub motor

Battery: 36V15Ah lithium battery

Tire: 700C*38C

Gear: fixed gear(belt drive)

Brake: Tektro hydraulic disc brake

FAT FOLDING MODELS

Reference Specification

Frame: alu alloy 6061

Fork: Mozo suspension fork

Motor: 48V500W hub motor

Battery: 48V12.5Ah lithium battery

Tire: 20"*4.0" fat tire

Gear: Shimano 7-spd

Brake: Tektro mechanical disc brake

B3



B4



B1



B5



REFERENCE SPECIFICATION

Frame: alu alloy 6061
Fork: alu alloy rigid fork
Motor: 48V750W hub motor
Battery: 48V12.5Ah lithium battery
Tire: 20"*4.0" fat tire
Gear: Shimano 7-spd
Brake: Tektro mechanical disc brake

REFERENCE SPECIFICATION

Frame: alu alloy 6061
Fork: Mozo suspension fork
Motor: 48V500W hub motor
Battery: 48V10Ah lithium battery
Tire: 20"*4.0" fat tire
Gear: Shimano 7-spd
Brake: Tektro mechanical disc brake

REFERENCE SPECIFICATION

Frame: alu alloy 6061
Fork: Mozo suspension fork
Motor: 48V500W hub motor
Battery: 48V10Ah lithium battery
Tire: 20"*4.0" fat tire
Gear: Shimano 7-spd
Brake: Tektro mechanical disc brake

REFERENCE SPECIFICATION

Frame: alu alloy 6061
Fork: alu alloy suspension fork
Motor: 48V500W hub motor
Battery: 48V15Ah lithium battery
Tire: 20"*3.0" tire
Gear: Shimano 8-spd
Brake: Tektro mechanical disc brake



MODEL NO.: B16



MODEL NO.: B20



MODEL NO.: B23



MODEL NO.: B24

FAT MODELS

Reference Specification

Frame: alu alloy 6061

Fork: MOZO alu suspension fork

Motor: 48V500W hub motor

Battery: 48V12.5Ah lithium battery

Tire: 26"*4.0" tire

Gear: Shimano 7-spd

Brake: Tektro mechanical disc brake

B9



B12



B14



B8



REFERENCE SPECIFICATION

Frame: alu alloy 6061
Fork: alu alloy suspension fork
Motor: 60V500W hub motor
Battery: 60V12.5Ah lithium battery
Tire: 26"*4.0" fat tire
Gear: Shimano 7-spd
Brake: Tektro Mechanical disc brake



MODEL NO.: B6

REFERENCE SPECIFICATION

Frame: alu alloy 6061
Fork: RST suspension fork
Motor: 48V1000W mid motor(M620)
Battery: 48V15Ah lithium battery
Tire: 26"*4.8" fat tire
Gear: Shimano 9-spd
Brake: Tektro hydraulic disc brake



MODEL NO.: B11

REFERENCE SPECIFICATION

Frame: alu alloy 6061
Fork: alu alloy rigid fork
Motor: 48V750W mid motor(BBS-02)
Battery: 48V15Ah lithium battery
Tire: 26"*4.0" fat tire
Gear: Shimano 7-spd
Brake: Avid BB5 mechanical disc brake



MODEL NO.: B15

REFERENCE SPECIFICATION

Frame: alu alloy 6061
Fork: alu alloy rigid fork
Motor: 48V1000W mid motor(M620)
Battery: 48V15Ah lithium battery
Tire: F: 24"*4.0" fat tire R: 20"*4.0" fat tire
Gear: Shimano 9-spd
Brake: Tektro hydraulic disc brake



MODEL NO.: B17

REFERENCE SPECIFICATION

Frame: alu alloy 6061
Fork: alu alloy rigid fork
Motor: 48V500W hub motor
Battery: 48V12.5Ah lithium battery
Tire: F: 26"*4.0" fat tire R: 20"*4.0" fat tire
Gear: Shimano 7-spd
Brake: Tektro Mechanical disc brake



MODEL NO.: B17

REFERENCE SPECIFICATION

Frame: alu alloy 6061
Fork: RST suspension fork
Motor: 48V750W mid motor
Battery: 48V13Ah lithium battery
Tire: 27.5"*3.0"
Gear: Shimano 9-spd
Brake: Tektro Mechanical disc brake



MODEL NO.: B19

REFERENCE SPECIFICATION

Frame: alu alloy 6061
Fork: GT suspension fork
Motor: 48V1000W mid motor(BBS-HD)
Battery: 48V15Ah lithium battery
Tire: 26"*4.8"
Gear: Shimano 9-spd
Brake: Tektro hydraulic disc brake



MODEL NO.: B13

REFERENCE SPECIFICATION

Frame: alu alloy 6061
Fork: GT suspension fork
Motor: 48V750W rear hub motor
Battery: 48V15Ah lithium battery
Tire: 26"*4.0"
Gear: Shimano 8-spd
Brake: Tektro mechanical disc brake



MODEL NO.: B10

FOLDING MODELS

Reference Specification

Frame: alu alloy 6061

Fork: alu alloy rigid fork

Motor: 36V250W rear hub motor

Battery: 36V7.8Ah lithium battery

Tire: 20"*1.95" tire

Gear: Shimano 7-spd

Brake: Tektro disc brake/V-brake)



MTB

MODELS

Reference Specification

Frame: alu alloy 6061

Fork: alu suspension fork

Motor: 48V500W hub motor

Battery: 48V12.5Ah lithium battery

Tire: 27.5"*2.1" tire

Gear: Shimano 7-spd

Brake: Tektro mechanical disc brake

M3



M6



M4

M14



REFERENCE SPECIFICATION

Frame: alu alloy 6061
Fork: alu alloy suspension fork
Motor: 36V250W hub motor
Battery: 36V10Ah lithium battery
Tire: 26"*2.1"
Gear: Shimano 7-spd
Brake: Tektro mechanical disc brake

REFERENCE SPECIFICATION

Frame: alu alloy 6061
Fork: GT suspension fork
Motor: 48V350W mid motor(Bafang M400)
Battery: 48V15Ah lithium battery
Tire: 27.5"*2.5"
Gear: Shimano 9-spd
Brake: Tektro hydraulic disc brake

REFERENCE SPECIFICATION

Frame: alu alloy 6061
Fork: RST suspension fork
Motor: 48V500W mid motor(Bafang M600)
Battery: 48V15Ah lithium battery
Tire: 27.5"*2.1"
Gear: Shimano 9-spd
Brake: Tektro hydraulic disc brake

REFERENCE SPECIFICATION

Frame: alu alloy 6061
Fork: RST suspension fork
Motor: 48V500W mid motor(Bafang M600)
Battery: 48V15Ah lithium battery
Tire: 27.5"*2.1"
Gear: Shimano 9-spd
Brake: Tektro hydraulic disc brake



MODEL NO.: M2



MODEL NO.: M9



MODEL NO.: M10



MODEL NO.: M11

REFERENCE SPECIFICATION

Frame: alu alloy 6061
Fork: alu alloy rigid fork
Motor: 36V250W hub motor
Battery: 36V7.5Ah lithium battery
Tire: 700C*25C
Gear: fixed gear
Brake: Tektro C-brake

REFERENCE SPECIFICATION

Frame: alu alloy 6061
Fork: alu alloy rigid fork
Motor: 36V250W hub motor
Battery: 36V10Ah lithium battery
Tire: 700C*35C
Gear: fixed gear(belt drive)
Brake: Tektro mechanical disc brake

REFERENCE SPECIFICATION

Frame: alu alloy 6061
Fork: alu alloy rigid fork
Motor: 36V250W hub motor
Battery: 36V10Ah lithium battery
Tire: 700C*25C
Gear: fixed gear(belt drive)
Brake: Tektro mechanical disc brake

REFERENCE SPECIFICATION

Frame: chromoly steel
Fork: chromoly steel rigid fork
Motor: 36V250W hub motor
Battery: 36V7Ah lithium battery
Tire: 700C*25C
Gear: fixed gear
Brake: Tektro C-brake



MODEL NO.: M13



MODEL NO.: M13-BELT



MODEL NO.: M16



MODEL NO.: M8

CITY MODELS

Reference Specification

Frame: alu alloy 6061

Fork: alu suspension fork

Motor: 36V250W hub motor

Battery: 36V10Ah lithium battery

Tire: 700C*40C tire(26" available)

Gear: Shimano 7-spd

Brake: Tektro mechanical disc brake

C4



C7



C8



C3



REFERENCE SPECIFICATION

Frame: alu alloy 6061
Fork: alu suspension fork
Motor: 36V250W hub motor
Battery: 36V10Ah lithium battery
Tire: 700C*40C tire(26" available)
Gear: Shimano 7-spd
Brake: Tektro mechanical disc brake



MODEL NO.: C1

REFERENCE SPECIFICATION

Frame: alu alloy 6061
Fork: alu suspension fork
Motor: 48V500W hub motor
Battery: 48V10Ah lithium battery
Tire: 27.5"*2.1" tire(26" available)
Gear: Shimano 7-spd
Brake: Tektro mechanical disc brake



MODEL NO.: C9

REFERENCE SPECIFICATION

Frame: alu alloy 6061
Fork: suspension fork
Motor: 48V500W hub motor
Battery: 48V15Ah lithium battery
Tire: F: 26"*2.0" R: 20"*2.0" tire
Gear: Shimano 7-spd
Brake: Tektro mechanical disc brake



MODEL NO.: C18

REFERENCE SPECIFICATION

Frame: alu alloy 6061
Fork: suspension fork
Motor: 48V500W hub motor
Battery: 48V15Ah lithium battery
Tire: 20"*3.0" tire
Gear: Shimano 7-spd
Brake: Tektro mechanical disc brake



MODEL NO.: C17

BEACH CRUISER

MODELS

Reference Specification

Frame: alu alloy 6061

Fork: steel rigid fork

Motor: 48V500W hub motor

Battery: 48V10Ah lithium battery

Tire: 26"*2.1" tire

Gear: Shimano 7-spd

Brake: Tektro mechanical disc brake

S3



S5



S2

S9



THESE MODELS ALSO CAN MAKE WITH **MID MOTOR**



C3



C7



C8



C9



F7



M3



B8



B9



B12

杭州通普机电科技有限公司

Hangzhou Top Mechanical & Electrical Technology Co.,Ltd.

Add.: Hezhuang Road No.336, Hangzhou, 311222, P.R. China

Tel: 86-571-88925985 Fax:86-571-88925885

Cel (Whats App):+86 18105712178

Wechat: +86 18105712178

Website: www.freepathebikes.com

Email: info@tope-cycle.com